

Appendix 1: Internship Profile

Has anyone ever told you, “Go big or go home”? During my internship, I did both!

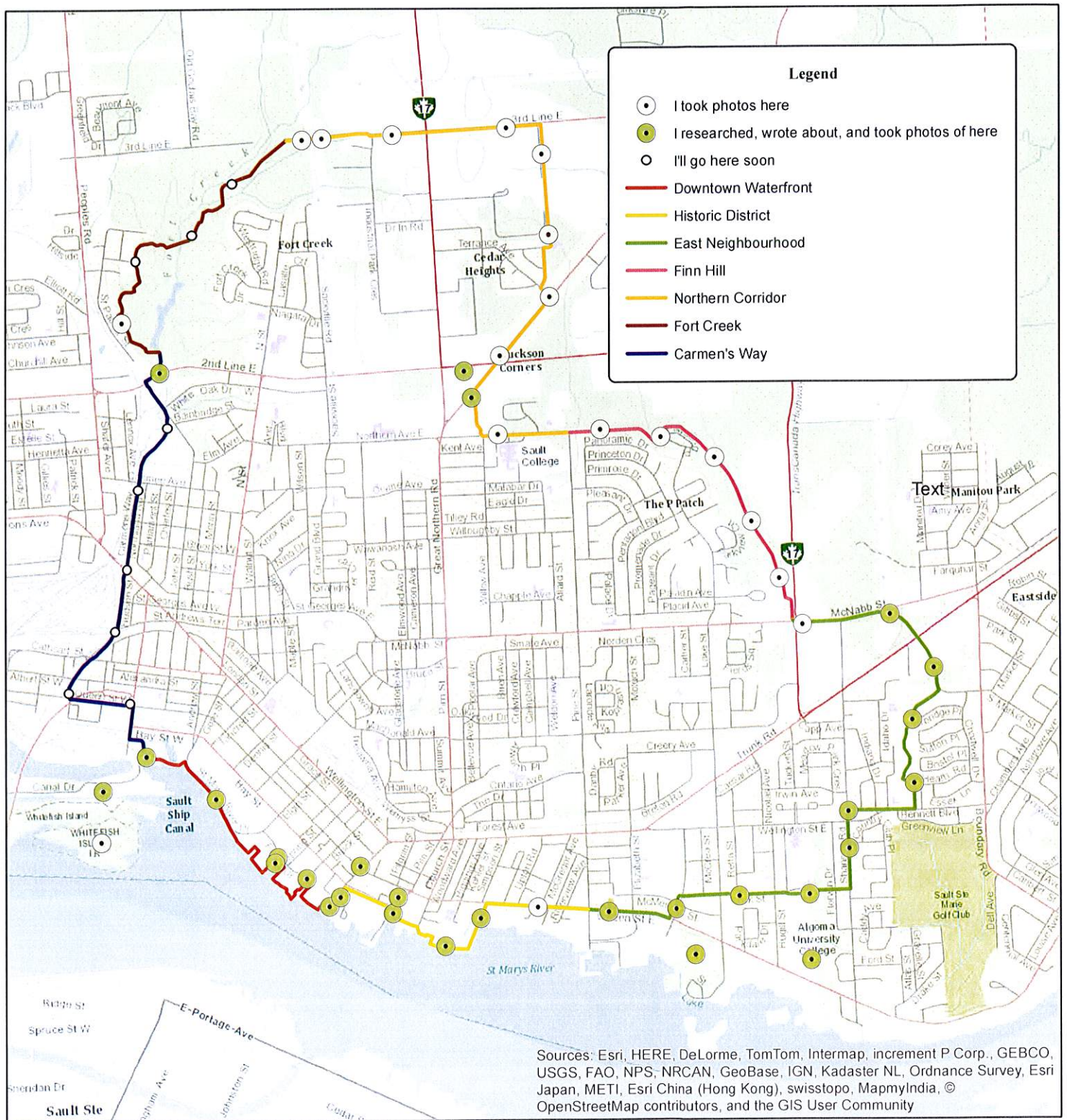
This summer I worked for the Animating the John Rowswell Hub Trail Project, which is based in my hometown of Sault Ste. Marie, Ontario. This project is creating a 22-kilometer-long exhibit based on a trail which winds through historically, culturally, and ecologically important areas of the city. My job was to work with the community to collect information about locations on the Trail, and then develop content for a mobile app, website, children’s trail guide, and audio tour. These resources will let the public explore the city with new eyes, using familiar places to bring different perspectives together in new ways. The Trail Guide and audio tour will be available in English, French, and Anishinaabemowin (the traditional language of the area), recognizing the three cultures which have defined much of the history of this region. My work is overseen by NORDIK, a community-based research institute. It goes to show that public history can be conducted even outside of typical historical institutions like archives and museums.

In three quick months, I dug up tons of interesting information from articles, books, videos, meetings, and interviews. I created content for 26 locations. I designed web pages, trail guide pages, and GIS maps. I presented our progress and new ideas to project partners and funders. I even got to spend time out on the trail taking photos and geotagging. The fast pace completely suited a generalist like me, who wants to learn how to do just about everything. The biggest challenge was getting used to writing for a general audience after so many years of university. But I’ll have plenty of time to hone my skills, since my contract will continue for another nine months!

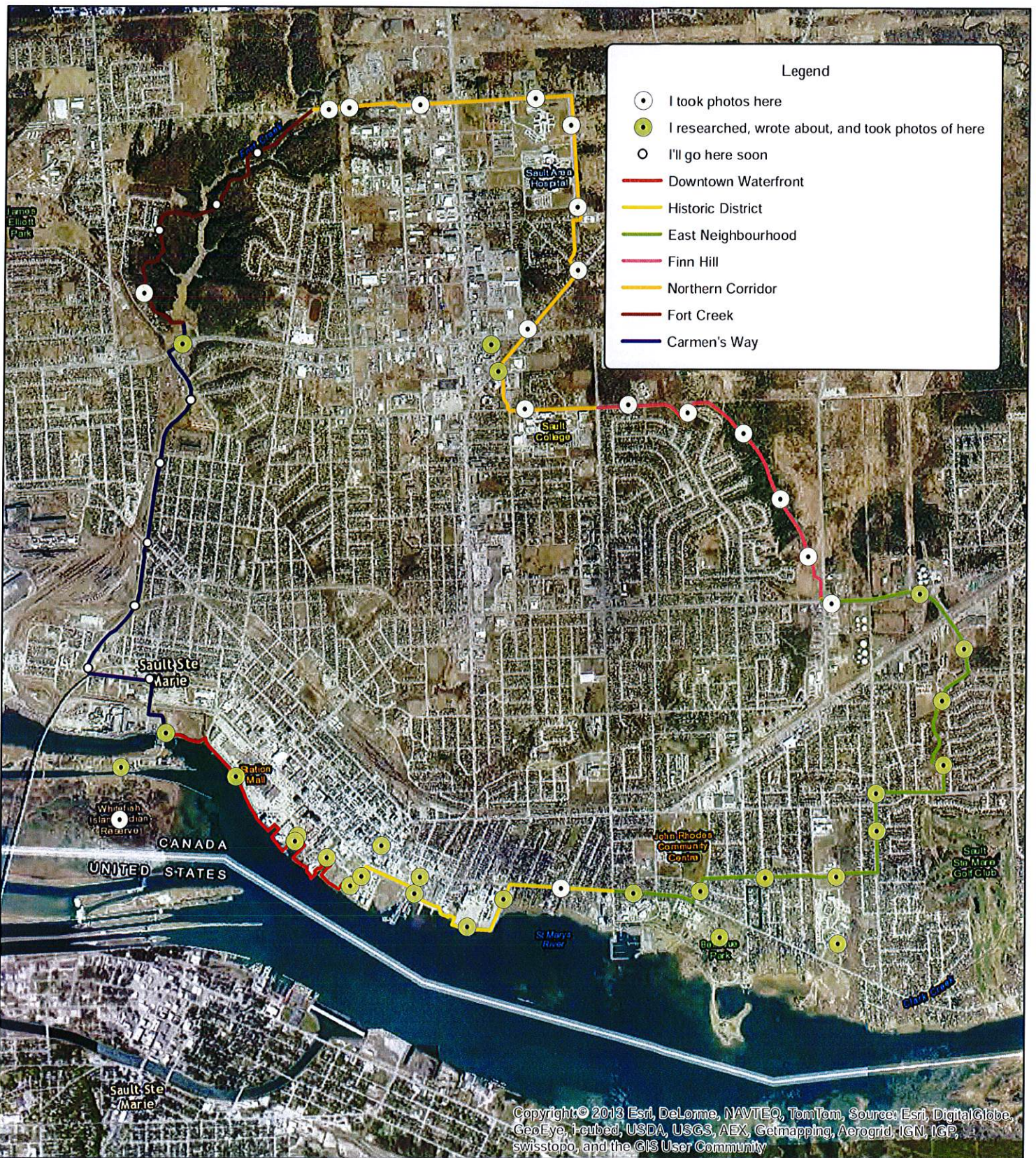
The internship is funded through the Northern Ontario Heritage Fund Corporation (NOHFC).

Appendix 2: John Rowswell Hub Trail Maps

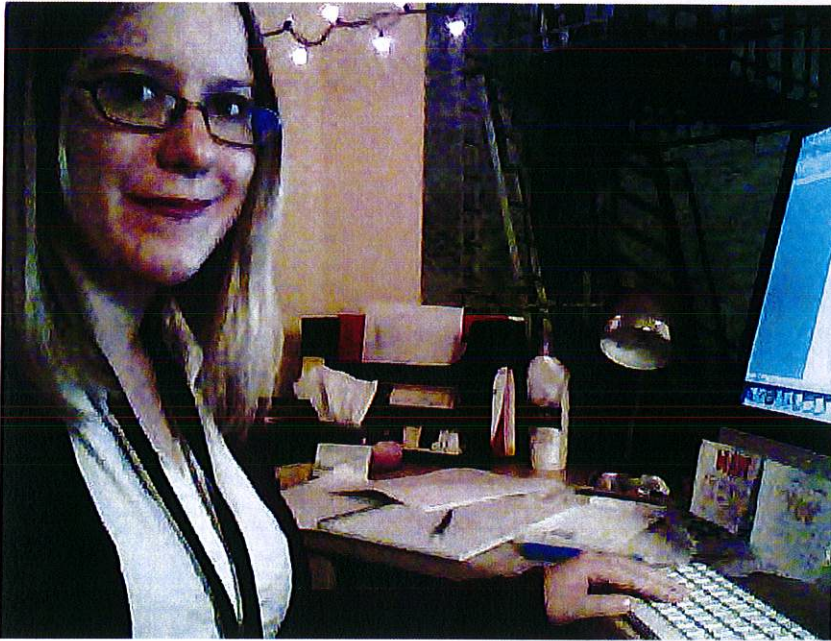
Signposts have been erected on the Hub Trail every 500m. For the Animating the Hub Trail Project, I am developing content for each of these markers, as well as points of interest that are between markers or otherwise near the Trail.



John Rowswell Hub Trail with satellite imagery



Appendix 3: Photos



August. The only decent picture with me actually in it. I'm writing for the Trail Guide. My office is full of interesting lights and decorations.



May. This shows a Trail distance marker. It's located at the Second Line entrance to Fort Creek Conservation Area. What a beautiful day!



August. After trying to snap several pictures, I finally got the perfect shot of a bumblebee and some goldenrod.



June. I walked for four hours on this day taking photos and geotagging things like heritage plaques, benches, distance markers, and public washrooms. Walking along the boardwalk downtown gave me an opportunity to watch the Great Lakes freighters. The land on the other side of the river is Sault Ste. Marie, Michigan.



July. The 17th marked the 200th anniversary of the building of Charles Ermatinger's house. I took a pic of this National Historic Site after the grand opening of its new multi-million dollar Heritage Discovery Center.